

## Lease Plan

# 207-209 REGENT STREET LONDON, W1

### Fifth Floor

— Lease Demise

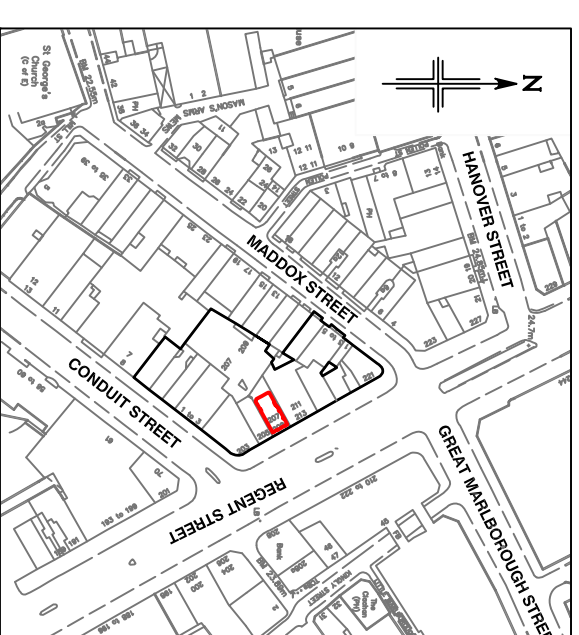
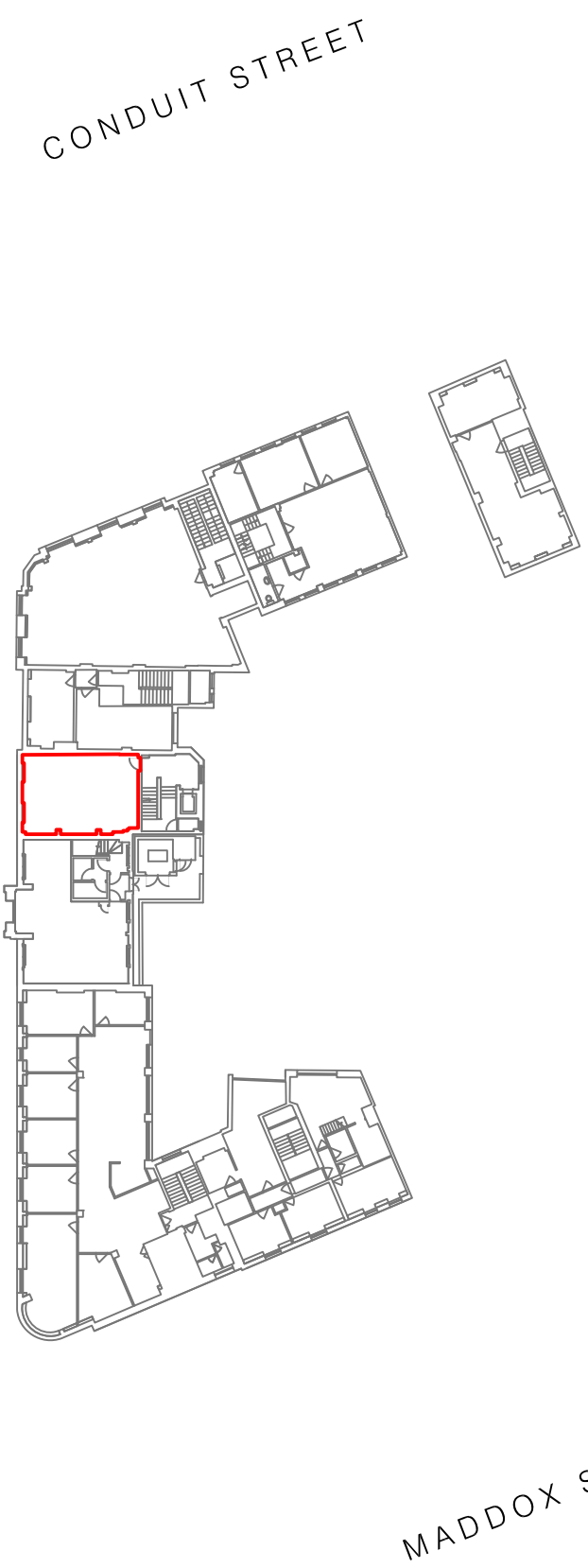
#### Notes:

Care should be taken when drawings are printed to avoid image distortion.

This drawing is issued for lease registration purposes only and further copies should be printed under the appropriate licence.

#### Revisions:

- A - Original Issue (March 2009)
- B - Client Amendments
- C -
- D -



#### Location Plan

Scale 1:2500

This drawing contains Ordnance Survey data which has been reproduced with the permission of the Controller of Her Majesty's Stationery Office. Crown copyright 2003.  
PC Licence Number 100020449

**Drg No. W6-207-209RS-5thFlr**

Issue B

March 2009

Presentation Scale 1:500 @ A3

**Plowman Craven PCA**

**T** +44(0)1582 765566    **E** [info@plowmancraven.co.uk](mailto:info@plowmancraven.co.uk)  
**F** +44(0)1582 765370    **W** [www.plowmancraven.co.uk](http://www.plowmancraven.co.uk)